









Arrowhead

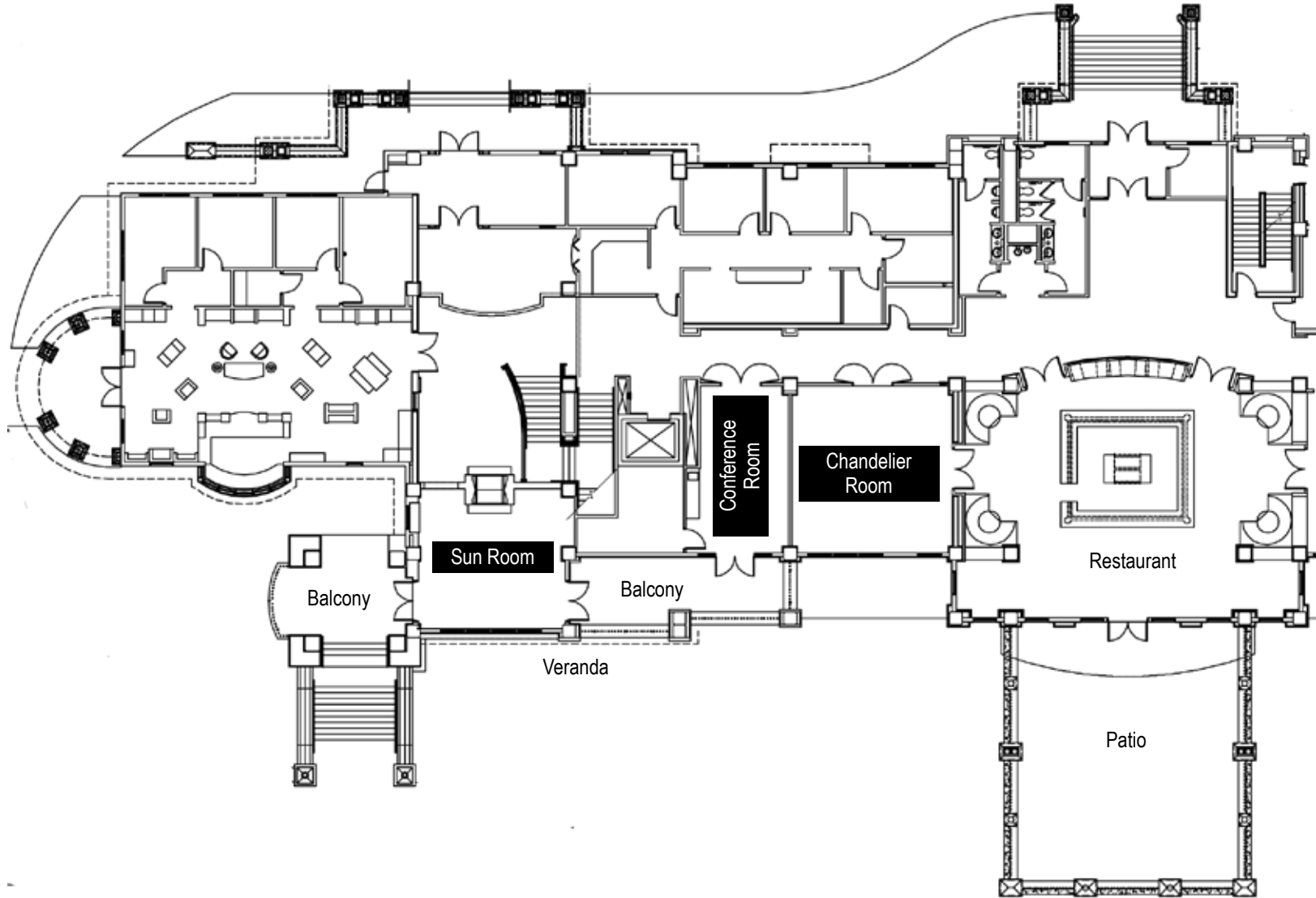
Meetings &
Banquet Rooms

MAIN LEVEL DIAGRAM

| Main Level |  |  |  |  |  |  |
|-----------------|---|---|---|---|---|---|
| | Reception | Classroom | Theatre | U-Shape | Rounds | Square Footage |
| Conference Room | 20 | n/a | 24 | n/a | n/a | 364 |
| Chandelier Room | 50 | 24 | 48 | 20 | 40 | 622 |
| Sun Room | 40 | 24 | 40 | 16 | 30 | 484 |

- The numbers listed above are maximum capacities. - Classroom option requires additional setup charges. - Minimums may apply.

Meeting Rooms





Meetings &
Banquet Rooms

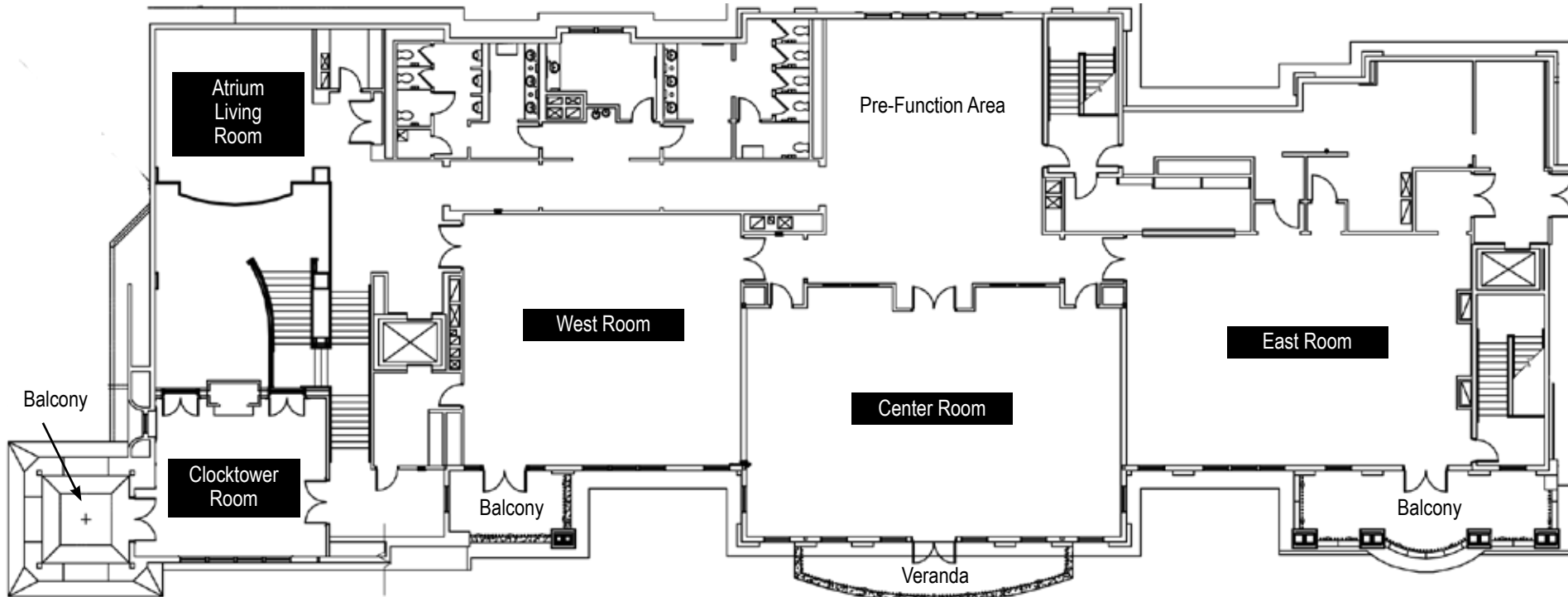
UPPER LEVEL DIAGRAM

Upper Level

| | Reception | Classroom | Theatre | U-Shape | Rounds | Square Footage |
|--------------------|-----------|-----------|---------|---------|--------|----------------|
| Clocktower Room | 40 | 24 | 40 | 16 | 40 | 484 |
| Atrium Living Room | 25 | n/a | n/a | n/a | n/a | 400 |
| West Room | 75 | 30 | 50 | 32 | 90 | 1620 |
| Center Room | 100 | 60 | 120 | 32 | 100 | 2040 |
| East Room | 100 | 60 | 80 | 32 | 110 | 1734 |
| Grand Ballroom | 350 | 75 | 200 | n/a | 300 | 5304 |

- The numbers listed above are maximum capacities. - Classroom option requires additional setup charges. - Minimums may apply.

Meeting & Banquet Rooms



Grand Ballroom (East, Central and West Rooms)